

Double Leaf T90 (EI₂ 90-SaC5) Fire Retardant Steel Door

Fire Protection **T90 (EI₂ 30-SaC5) tested acc. to EN 1634-1**

Optional Audited Additional Functions

- Smoke Control	RS	tested acc. to DIN 1634-3
- Sound Insulation	up to 42 dB	tested acc. to EN ISO 10140-2
- Burglar Protection	RC1/RC2/RC3/RC4	tested acc. to EN 1627
- Fanlight, Top Panel, Side Panel		
- Stainless Steel		

Range of Dimension

Width from 1375 mm to 3250 mm
Height from 1750 mm to 3250 mm

Technical Specification and Tender Text

Product:	T90-1 (EI₂ 90-SaC5) double leaf fire retardant steel door brand Buchele tested acc. to EN 1634-1	
Door Type:	TSN-12 (system Schroeders)	
Structural Opening: x mm	
Door Leaf:	69 mm thick, three sides rebated, thin or thick rebate securing pin	
Threshold:	Separation sill surface galvanized	
Frame:	3-sided corner frame with sealing profile in the rebate	
Hinges:	Three-part construction hinges with ball bearing spacer ring	
Door Closer:	2 pieces door closer system with standard arm 1 piece door coordinator	
Fitting:	Mortise lock with latch lever function (prepared for installation of a profile cylinder lock, provided by customer) Door handle set synthetic material black in U-shape with round plated short-plate. Passive leaf with concealed shoot bolt lock	
Surface:	Door leaf and frame galvanized and primed with 2K-PUR primer (Very High Solid) similar RAL 7035	
Assembly:	Delivery and professional assembly including filling of the frame with mortar of group III.	
Installation:	Masonry	≥ 240 mm
	concrete	≥ 140 mm (as of 2510 x 2510 mm ≥ 240 mm)
	areated concrete	≥ 150 mm (as of 2510 x 2510 mm ≥ 200 mm)
	mounting wall F90	≥ 100 mm (up to max. 2500 x 2500 mm)

Supplementary Equipment

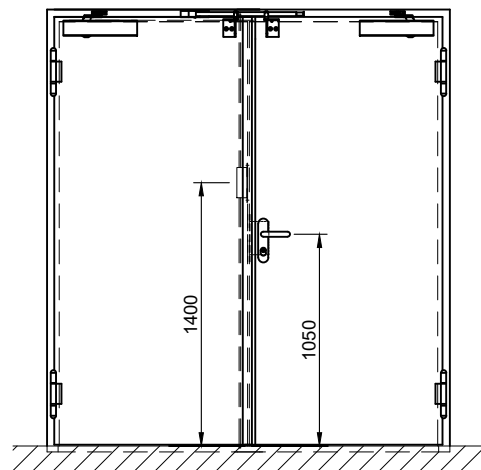
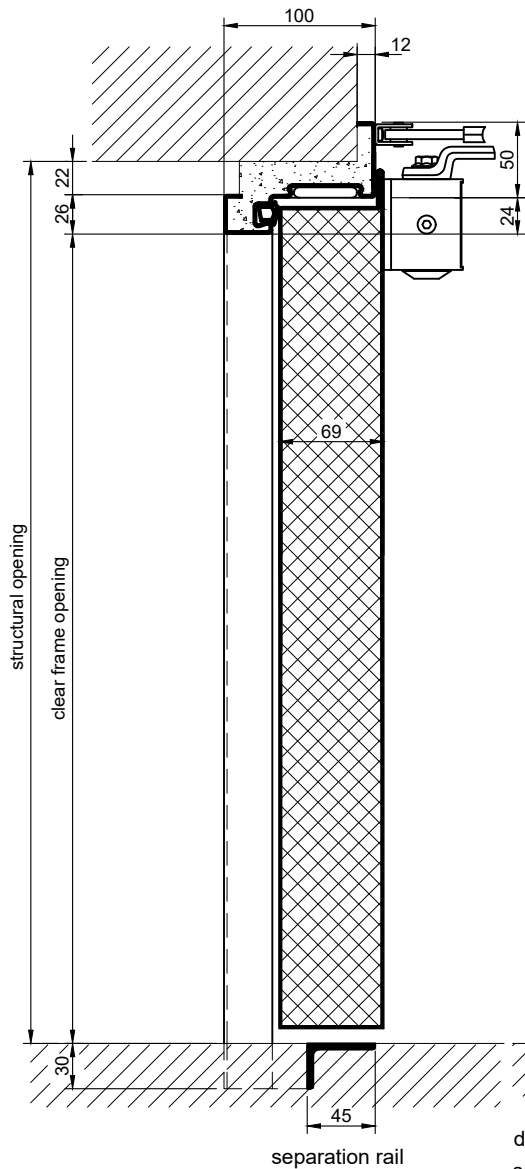
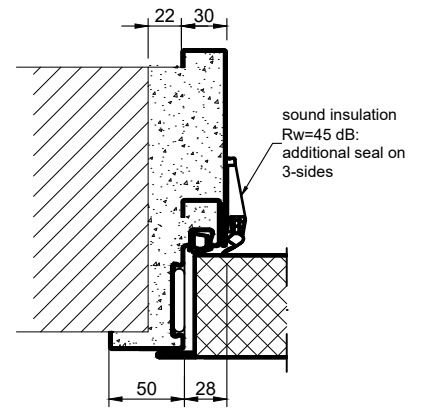
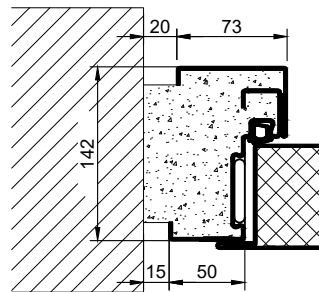
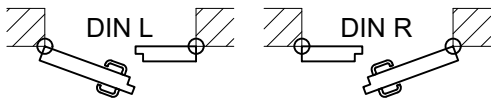
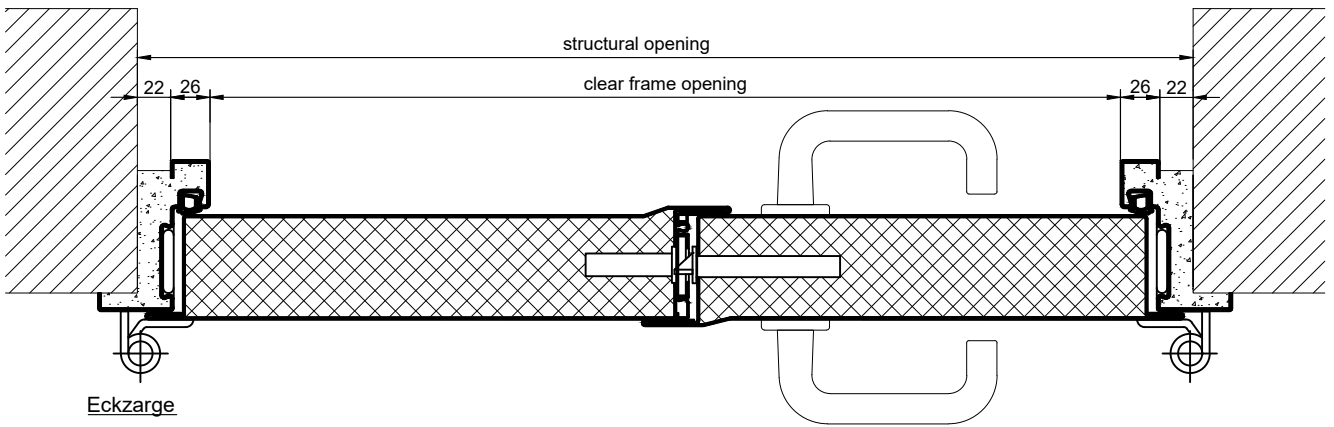
Glazing:

F90 fire-protective glazing fixed with profiled and visible screwed steel glazing bars.

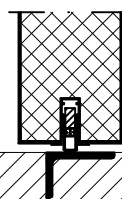
Minimum border 130 mm all round
max. size of glass 940 x 1900 mm.

Stainless Steel:

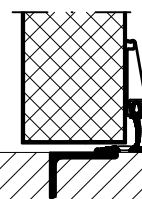
Material 1.4301 (V2A) or 1.4404 (V4A),
Surface mill finish or brushed.



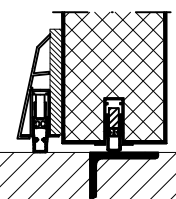
thresholds (more on request):



drop seal
sound insulation Rw = 35 dB



slide seal
sound insulation Rw = 39 dB



sound insulation Rw = 43 dB